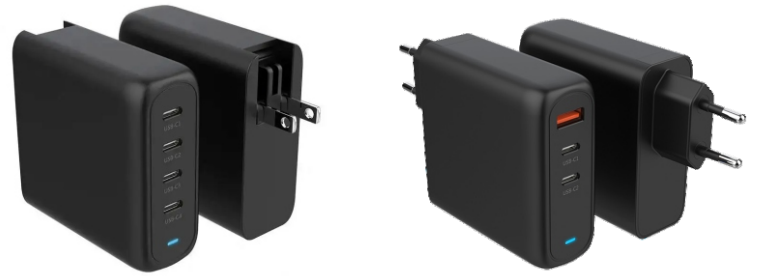


## FEATURES:

- Input: AC 100-240V~ 50/60Hz
- Available plug: US, EU,AU,UK plug
- Port: 2xTYPE C + TYPE A port
- Ovp, Ocp, Scp and Over load protection
- GAN TECH, 140W PD Charger, smart
- Efficiency level: VI
- Dimension: 74.0\*74.0\*32.0mm(exclude plug)
- Protocol: TypeC PD2.0/PD3.0/PD3.1/PPS, QC4/QC4+/QC3.0/QC2.0 , FCP, SCP, AFC, Apple2.4 , BC1.2, MTK



## SAFETY:

SAFETY:	
Safety Standard	UL 62368, IEC 62368, EN 61558,IEC60601,IEC60335, IEC60065
Safety Approval	UL/cUL, CE, FCC, UKCA, PSE, CB, SAA, KC, TUV
EMC Standard	EMC EMISSION: EN55032 class B (CISPR32), EN61000-3-2,-3, EAC TP TC 020 EMC IMMUNITY: EN61000-4-2,3,4,5,6,8,11, EN55024; light industry level, criteria A, EAC TP TC 020
MTBF	50K hrs min. MIL-HDBK-217F (25°C)

## MODEL LIST:

MODEL	USB PORT	OUTPUT	Single Port POWER	TOTAL POWER
P140A-GaN 3C	USB C PORT 1	PD: 5V3A,9V2.22A,12V1.67A	20W	140W
	USB C PORT 2	PD: 5V3A,9V3A,12V3A,15V3A,20V5A,28V5A	140W	
	USB C PORT 3	PD: 5V3A,9V3A,12V3A,15V3A,20V5A,28V5A	140W	
MODEL	USB PORT	OUTPUT	Single Port POWER	TOTAL POWER
P140A-GaN 2C1A	USB A PORT 1	QC3.0: 5V3A,9V2.22A,12V1.67A	18W	140W
	USB C PORT 2	PD: 5V3A,9V3A,12V3A,15V3A,20V5A,28V5A	140W	
	USB C PORT 3	PD: 5V3A,9V3A,12V3A,15V3A,20V5A,28V5A	140W	
MODEL	USB PORT	OUTPUT	Single Port POWER	TOTAL POWER
P130A-GaN 4C	USB C PORT 1	PD: 5V3A,9V3A,12V3A, 15V3A, 20V2.5A	50W	140W
	USB C PORT 2	PD: 5V3A,9V3A,12V3A, 15V3A, 20V2.5A	50W	
	USB C PORT 3	PD: 5V3A,9V3A,12V3A,15V3A,20V5A	100W	
	USB C PORT 4	PD: 5V3A,9V3A,12V3A,15V3A,20V5A	100W	

## Mechanical Diagram:

