

KI-2C-DP2 Series 40W

Whole Family: KI-0XX-2C-DP2- [20W 40W 60W]



Features

Output:	Constant Current (DIP Adjustment)
Range:	100-277VAC
PFC design:	Built-in active PFC function
Efficiency:	Up to 85%
Protections:	Open circuit /short circuit/ over temperature/ over load
Heat dissipation:	Cooling by free air convection
Waterproof performance:	IP20
Dimming function:	DALI&PUSH 2 in 1 dimming (CCT) digital dimming, accurately dimming, stable and smooth
Dimming range:	0-100%, LED lights dimming from 1%
Application:	Suitable for LED lighting and moving sign applications
Warranty:	5 years warranty

DALI & push 2 in 1 dimmable LED-Constant Current driver-KI-2C-DP2 series 40W

Specification

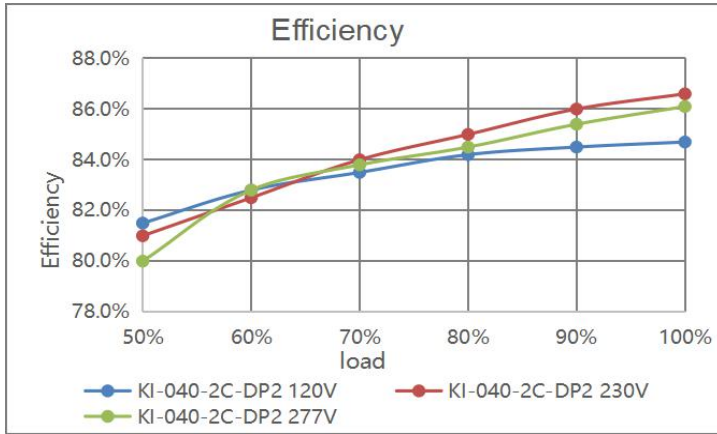


Model		KI-040-2C-DP2																
Certificate		CE / SELV /Class 2 / Class P /Type HL / ROHS / REACH																
Output	Rated current (A)	0.5	0.55	0.6	0.65	0.7	0.75	0.8	0.85	0.9	0.95	1.0	1.05	1.10	1.15	1.20	1.20	
	DIP Code	⬇⬇⬇⬇		⬇⬇⬇⬇		⬇⬇⬇⬇		⬇⬇⬇⬇		⬇⬇⬇⬇		⬇⬇⬇⬇		⬇⬇⬇⬇		⬇⬇⬇⬇		
	DIP Code		⬇⬇⬇⬇		⬇⬇⬇⬇		⬇⬇⬇⬇		⬇⬇⬇⬇		⬇⬇⬇⬇		⬇⬇⬇⬇		⬇⬇⬇⬇		⬇⬇⬇⬇	
	Current Tolerance	±5%																
	DC Voltage (V)	6-42											6-40	6-38	6-36	6-35	6-33	6-33
	No-load Voltage	55V (max)																
	Rated power	21.0	23.1	25.2	27.3	29.4	31.5	33.6	35.7	37.8	39.9	40.0	39.9	39.6	40.3	39.6	39.6	
Input	Rated Voltage	100-277VAC																
	Rated Frequency	47-63HZ																
	Power Factor	0.97@120VAC 60Hz					0.93 @230VAC 50Hz					0.87 @277VAC 60Hz						
	THD(y.p.)@full load	15.0%@120VAC 60Hz					22.0%@230VAC 50HZ					25.0%@277VAC 60HZ						
	Efficiency (Typ.)	83%@120VAC 60Hz					85% @230VAC 50Hz					85%@277VAC 60Hz						
	No load power	0.70W@120VAC 60Hz					0.7W@230VAC 50HZ					0.65W@277VAC 60HZ						
	Standby power (W)	0.49W @120VAC 60Hz					0.47W @230VAC 50Hz					0.48W @277VAC 60Hz						
	AC Current (Max.)	0.50A																
	Inrush Current	21.4A, 4.2us@50%lpeak 120VAC																
		41.0A, 4.2us@50%lpeak 230VAC																
49.4A, 4.0us@50%lpeak 277VAC																		
Leakage current	<0.50mA																	
Protection	Short Circuit	Constant current mode, recovers automatically after fault condition is removed																
	Over temperature	Ambient temp. over 50°C±5°C, output current will be reduced to 50%; Ambient temp. over 60°C±5°C, output current will be reduced to 0%; ambient temp. reduce to 45°C±5°C, recovers automatically.																
Environment	Working TEMP.	-40-+55°C																
	Working Humidity	20-90%RH, non-condensing																
	Storage TEMP.Humidity	-40-+80°C,10-95%RH																
	TEMP. coefficient	±0.03%/°C (0-50°C)																
	Vibration	10-500Hz, 2G 10min./1 cycle,period for 60min.each along X,Y,Z axes																
Safety&EMC	Safety standards	EN61347-1 EN61347-2-13(EU) UL8750 CAN/CSA-C22.2 No.250.13 (US)																
	Withstand voltage	I/P-O/P:3.75KVAC (EU) I/P-O/P:1.8KVAC (US)																
	Isolation resistance	I/P-O/P:100MΩ / 500VDC / 25°C / 70%RH																
	EMC Emission	EN55015 EN61000-3-2,3(EU)																
	EMC Immunity	EN61000-4-2,3,4,5,6,11 EN61547 FCC 47 CFR Part 15 ,Subpart B (US)																
Others	Weight	0.225Kg																
	Size	171.5*54*20mm(L*W*H)																
	Packing	250*190*135mm 20PCS/CTN																

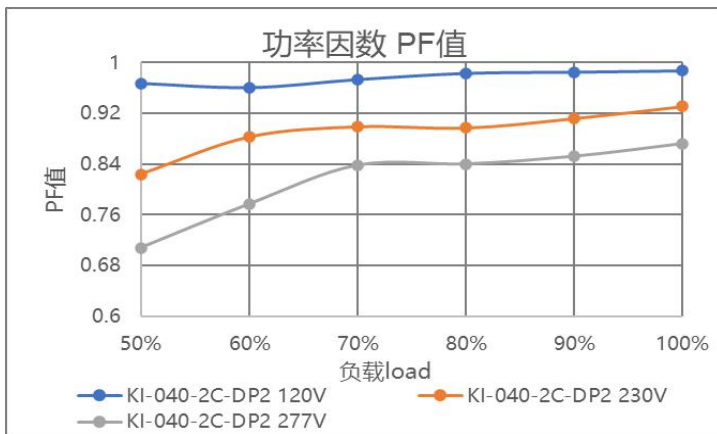
DALI & push 2 in 1 dimmable LED-Constant Current driver-KI-2C-DP2 series 40W

Notes	1. All parameters NOT specially mentioned are measured at 230VAC input, rated load and 25°C of ambient temperature
	2. Tolerance: includes set up tolerance, line regulation and load regulation.

Efficiency Curve (efficiency vs output load)

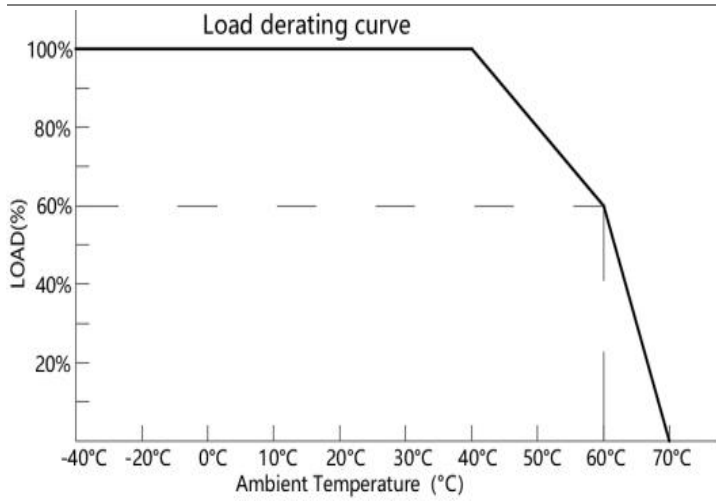


Power Factor Curve



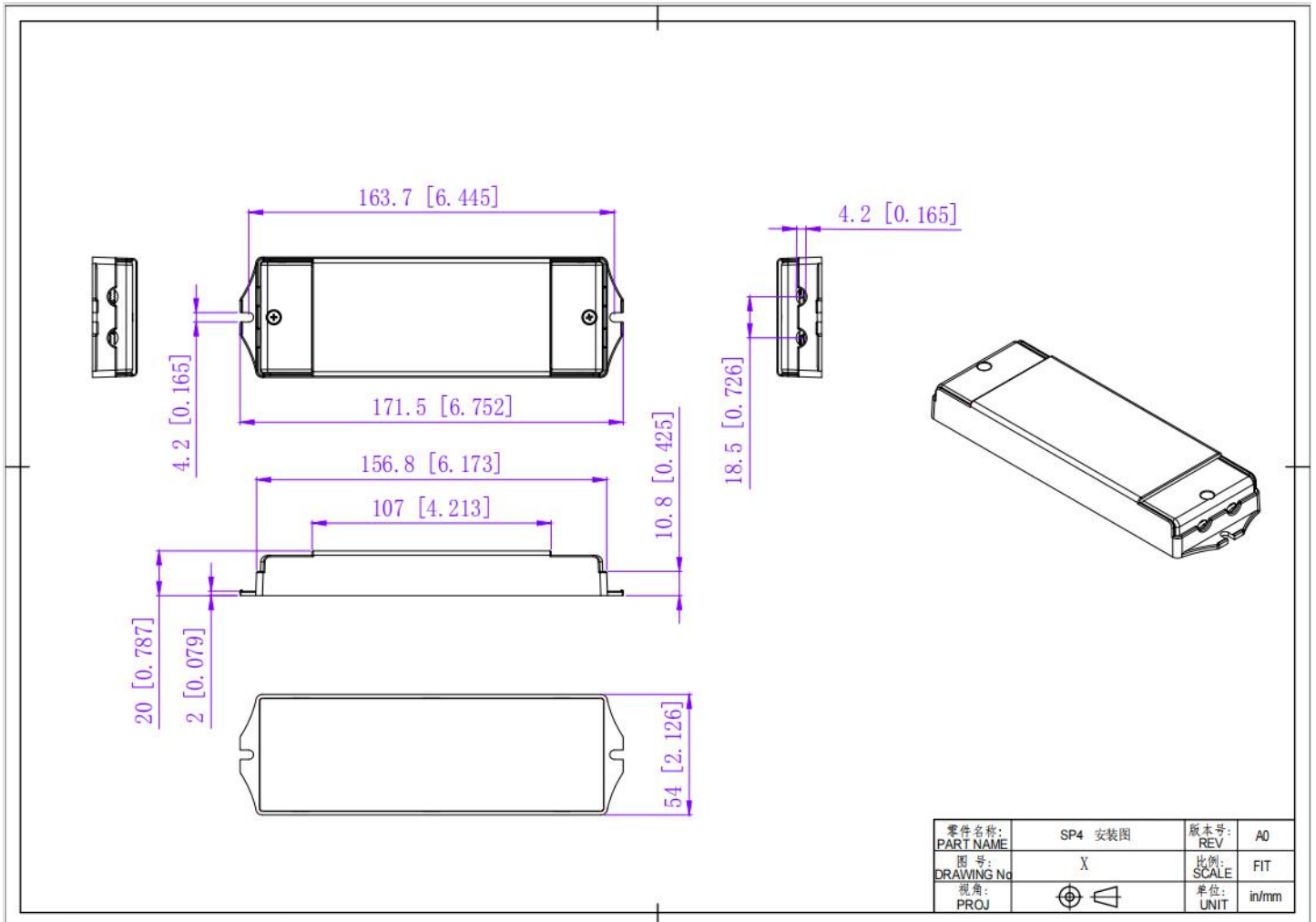
Derating Curve (output load vs TEMP.)

DALI & push 2 in 1 dimmable LED-Constant Current driver-KI-2C-DP2 series 40W



1. To extend their life, please refer to the Derating Curve and derate according to the temperature.
2. Please note that the rise in temperature of LED fixtures over a long period of time will cause their power to rise. Therefore, we recommend the power supply to reserve a certain amount of load to avoid overloading .

Mechanical Specification



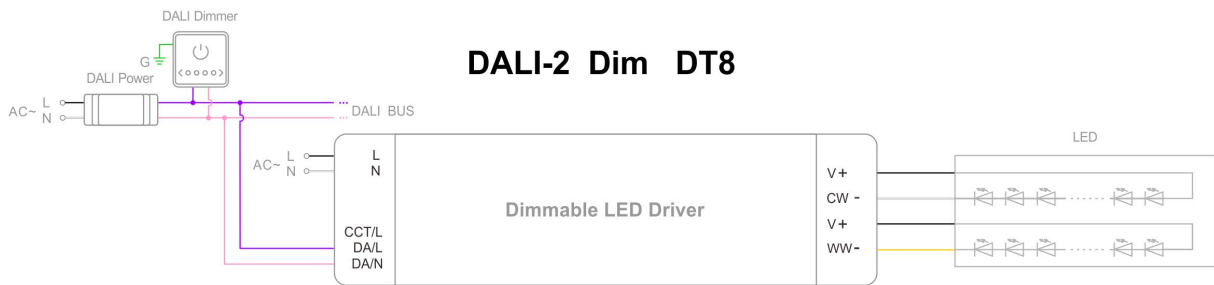
1. Input with DG126 terminals 3P: Live Wire AC (L), Neutral Wire AC(N).
2. Output LED SEC with DG126 terminals 2P: output Positive (LED+), output negative (LED-). Connected to LED Lamps.
3. DALI or PUSH Dim. terminals with DG126 terminals 2P:
4. when DALI dimming, signal dimming DA1, DA2 (No polar) connected to the BUS of the DALI Master;
when PUSH dimming, (N) is connected to AC (N) while (L) is connected to Push dim switch dimmer(L) ;

Warm tips:

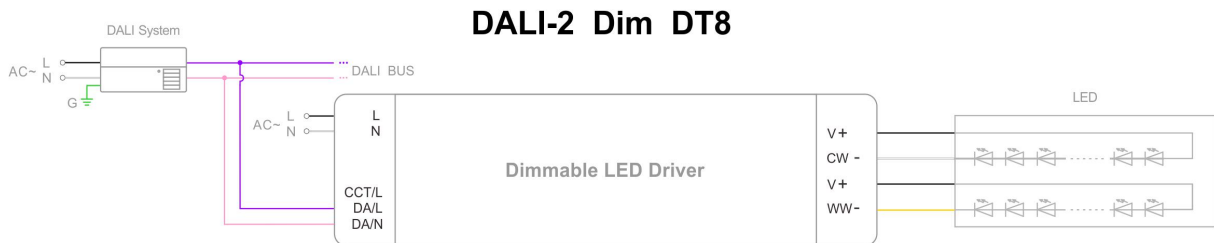
1. Suggested wire diameter: Input 0.75-2mm²; Output:0.5-2mm².
2. Any other requests for, we can customized.

Dimming Operation and Connecting Diagram

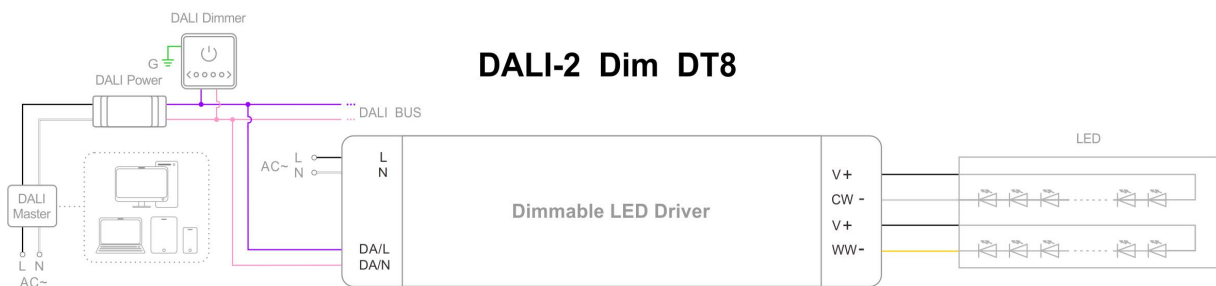
- Using DALI-2 dimming with DALI power and dimmer



- Using DALI-2 dimming with DALI system and DALI bus



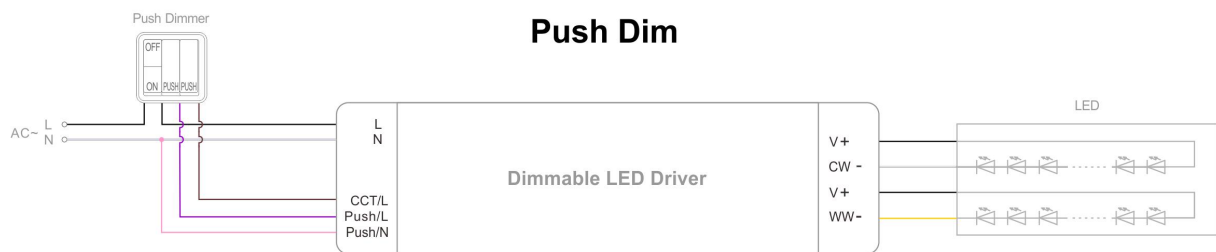
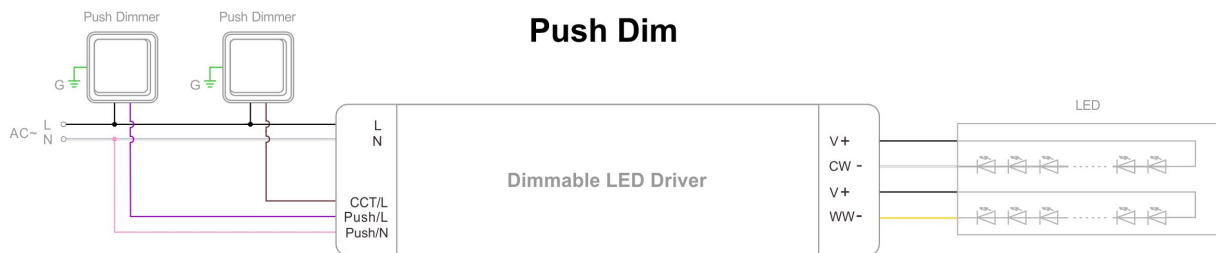
- Using DALI-2 dimming with intelligent device, DALI master and dimmer



DALI & push 2 in 1 dimmable LED-Constant Current driver-KI-2C-DP2 series 40W

Note: For DALI Dimming Wiring Diagram 3, please noted that only one DALI power is need in the DALI bus, so no extra DALI power is needed if the Master or Dimmer already includes the DALI Power.

- Using PUSH dimming with dimmer (on & off function)



Instruction

1. This driver should be installed by qualified and professional person.
2. Please make sure the driver is installed with adequate ventilation around it to allow for heat dissipation.

DALI & push 2 in 1 dimmable LED-Constant Current driver-KI-2C-DP2 series 40W

3. Ensure that wiring is correct before test in order to avoid light and power supply damage.
4. If driver Cannot work normally, don't maintain privately.